

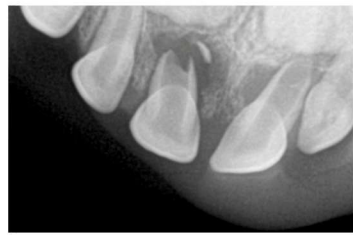
Injuries To Baby Incisors



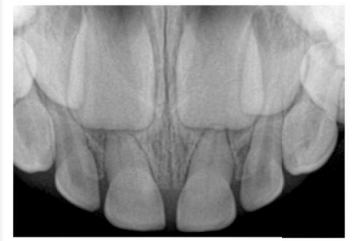
- Keep area clean
- Tylenol as needed
- Watch for color change / swelling
- Follow up per Dr. instructions
- Call office with changes



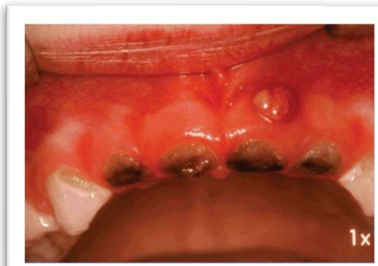
Necrotic vs. Bruise



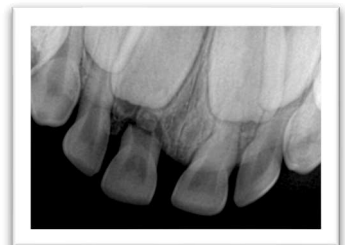
Necrotic Incisor



Pulpal Canal Obliteration (self-healing)



Abscess



**Continue to monitor
Early Exfoliation?**