

## SDF Treatment

Silver Diamine Fluoride (SDF) is a non-invasive treatment option for cavities, using a topical medicine that is painted on the tooth instead of removal of decay with a handpiece and a restoration (a filling).

### Pros: Cons:

- Quick, easy, painless
- Relieves sensitivity
- Re-mineralizes natural tooth structure
- Prevent biofilm adhesion
- Arrests 80% of “open” cavities
- Permanently stains cavities black
- Cavities that trap food may still require a restoration
- Not an option for deep cavities
- Decay may still progress and require a restoration

\*Proper diet and oral hygiene, including daily flossing, are critical for long term success

\*\*Two applications a month apart are recommended for a higher success rate

### SDF Treated Incisors

BEFORE



AFTER



### SDF Treated Molars

BEFORE



AFTER



## SDF + Floss Treatment

Silver Diamine Fluoride (SDF) is a non-invasive treatment option for cavities, using a topical medicine that is painted on the tooth instead of removal of decay with a handpiece and a restoration (a filling).

### Pros:

- Quick, easy, painless
- Non-invasive
- Re-mineralizes your natural tooth structure
- Prevent biofilm adhesion
- Can arrest lesions when applied twice yearly
- Can avoid or delay restorations (fillings)

### Cons:

- Permanently stains decay black
- Some lesions fail to arrest with SDF treatment alone
- Not an option for deep cavities
- Lesions between molars are the most likely to grow and may require a restoration
- May stain skin or gums temporarily (1-3 weeks)

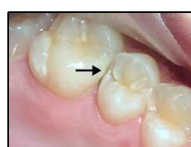
\*Proper diet and oral hygiene, including daily flossing, are critical for long term success

\*\* Two applications are recommended for a higher success rate

### SDF Application to Interproximal Surfaces with Spongy Floss



### Clinical Appearance of SDF Treated Extensive Interproximal Lesions



Should you have any questions, please call us: 905-709-3888